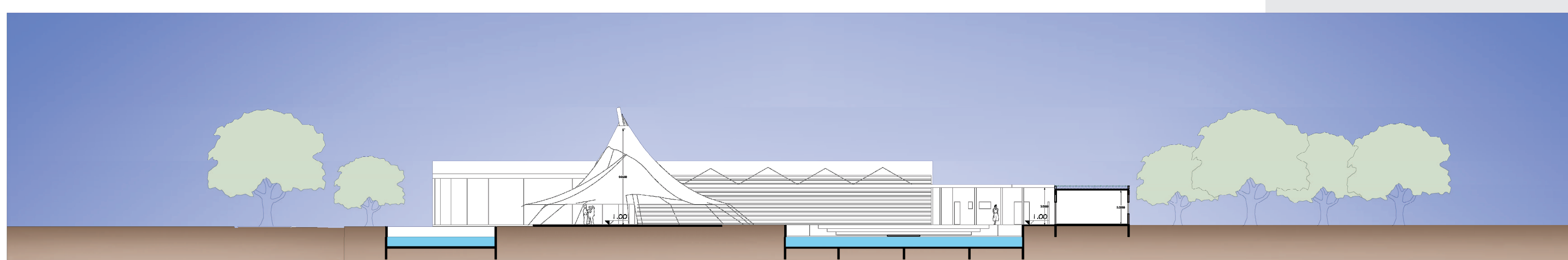
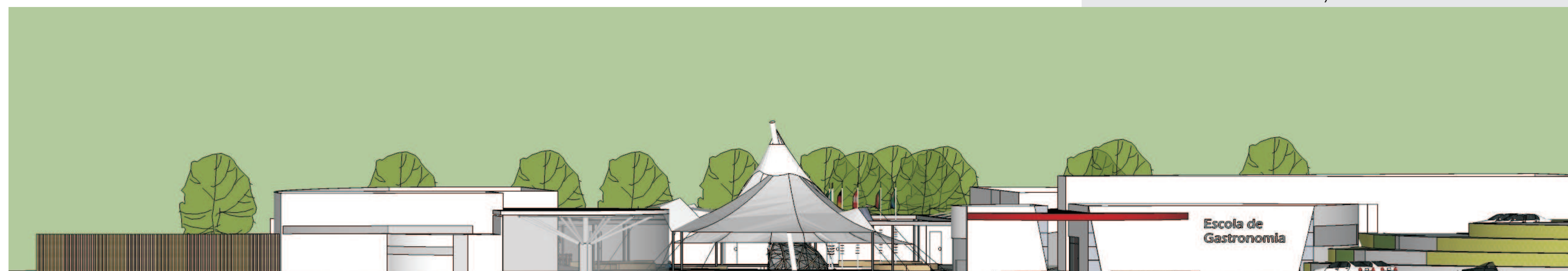


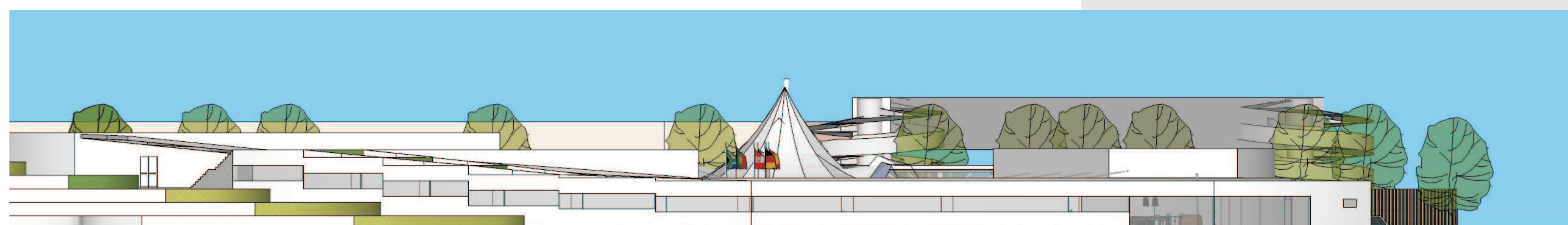
Corte AA'
Esc.:1/250



Corte BB'
Esc.:1/250



Fachada Sudeste



Fachada Norte



Escola de Gastronomia

ARQUITETURA E URBANISMO
TRABALHO FINAL DE GRADUAÇÃO

ALUNA: DEBORA VIEIRA ROCHA
ORIENTADOR: JOÃO L. RIETH

4/5